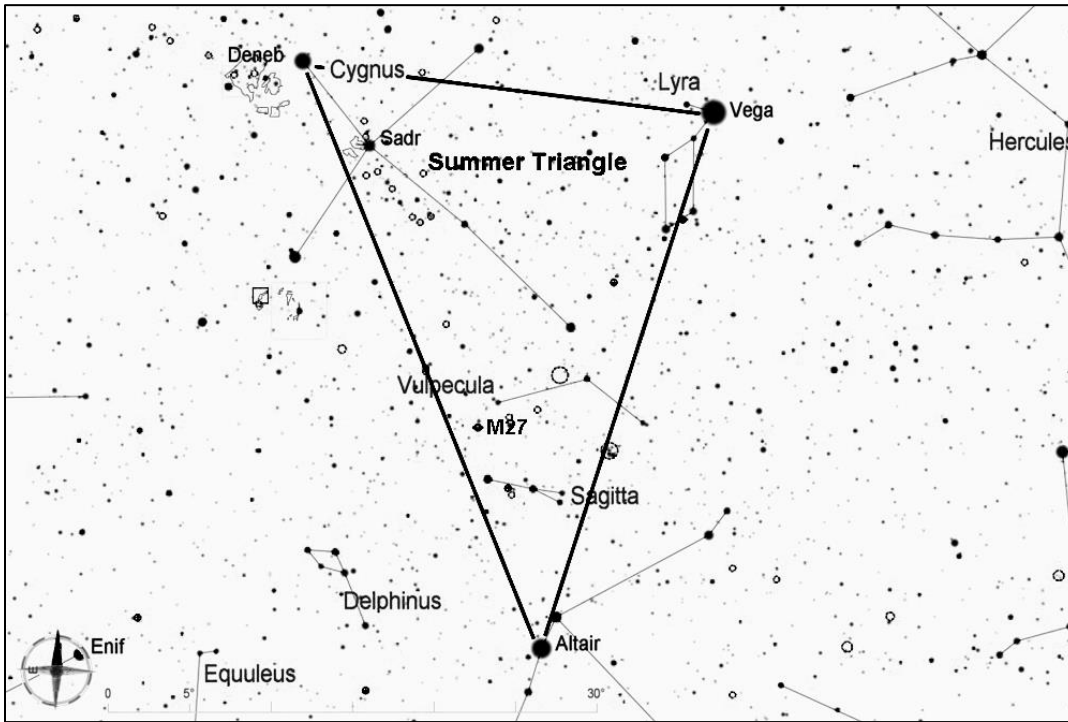


## Messier 29, Open Cluster in Cygnus

This small but distinctive cluster contains about 8 bright stars and many dimmer ones. It is a nice object to view at low power because it stands out well against the background stars. The cluster lies about 5000 light years away. Through a telescope, the cluster can be seen against a background that is filled with stars from the Milky Way.



Start by finding the Summer Triangle, which consists of the three of the brightest stars in the sky--Vega, Deneb, and Altair. The Summer Triangle is high overhead throughout the summer, and it sinks lower in the west as fall progresses.

For this star hop, start from Deneb, the first-magnitude star that forms the tail of Cygnus, the swan (or if you visualize the brightest stars of Cygnus as a cross shape, Deneb is at the top of the cross).

From Deneb, look to the southwest for Sadr, the magnitude 2 star at the center of the Cygnus cross shape. M29 is less than 2 degrees south of Sadr, and it should be easy to spot in a telescope with a wide-field eyepiece.

