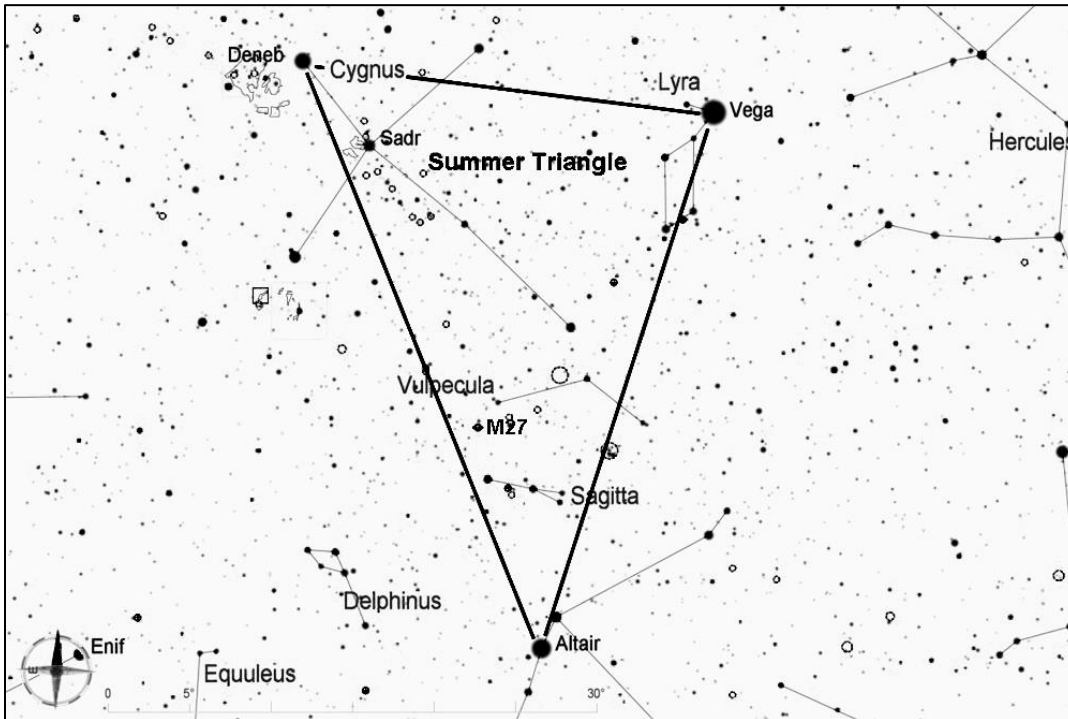


## Messier 75, Globular Cluster in Sagittarius

Messier 75 is a globular cluster located in the northwest corner of Sagittarius, near the constellation Capricornus. Because of its distance (68,000 light years), M75 appears fairly small and dim. It is densely concentrated in its center. Some stars can be resolved around the edges with medium-sized telescopes.



Start by finding the Summer Triangle, which consists of the three of the brightest stars in the sky--Vega, Deneb, and Altair. The Summer Triangle is high overhead throughout the summer, and it sinks lower in the west as fall progresses.

For this star hop, start from Altair in the constellation Aquila, the eagle.

From Altair, follow the stars that form the upper edge of Aquila the eagle's east wing, and use these stars as a pointer to take you to the constellation Capricornus. To me, the stars of Capricornus form a large, open-mouthed smile. Once you locate Capricornus, look at the southwest edge of the smile shape, and visualize a large triangle pointing to the southwest, as shown in the chart below. M75 is at the point of this triangle. It can be difficult to locate because there are no bright stars nearby. Note the small triangle of stars circled in the chart, which should be visible in binoculars or a finderscope and can help guide you to M75.

