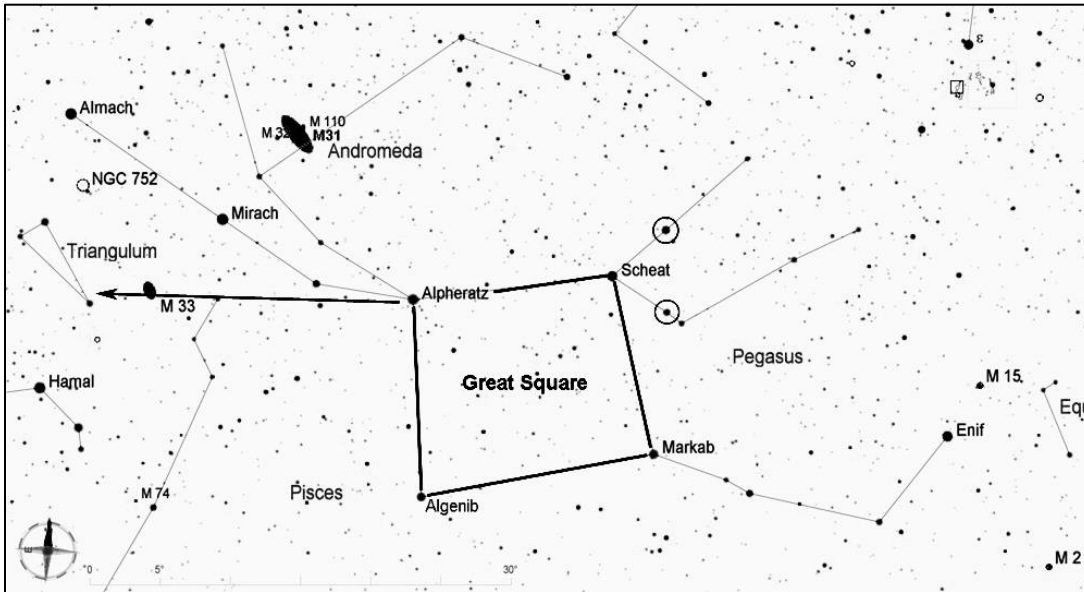


NGC 752 (Caldwell 28), Open Cluster in Andromeda

This is a large and fairly bright group of about 70 or 80 stars spread over nearly a degree of sky. It is a relatively nearby open cluster, about 1200 light years away. Because of its large size, it is best viewed either with binoculars or with a telescope at low magnification.



Start by finding the Great Square of Pegasus, which rises in the eastern sky during the early fall evenings, is high overhead later in the fall, and sinks in the western sky during early winter. To be sure you know how the square is oriented in the sky, look for the two stars outside the northwest corner of the square (circled in the chart here) that form a small triangle with Scheat.

Using the northern edge of the Great Square as a pointer, extend a line to the east about twice the size of the Square, and you will arrive in the vicinity of the constellation Triangulum, whose 3 brightest stars form a long and narrow triangle.

From the two stars at the short edge of Triangulum, move to the northwest about 3.5 degrees, which is about twice the distance between these two stars. This will take you to the position of NGC 752. The cluster will be clearly visible in binoculars or a finderscope.

