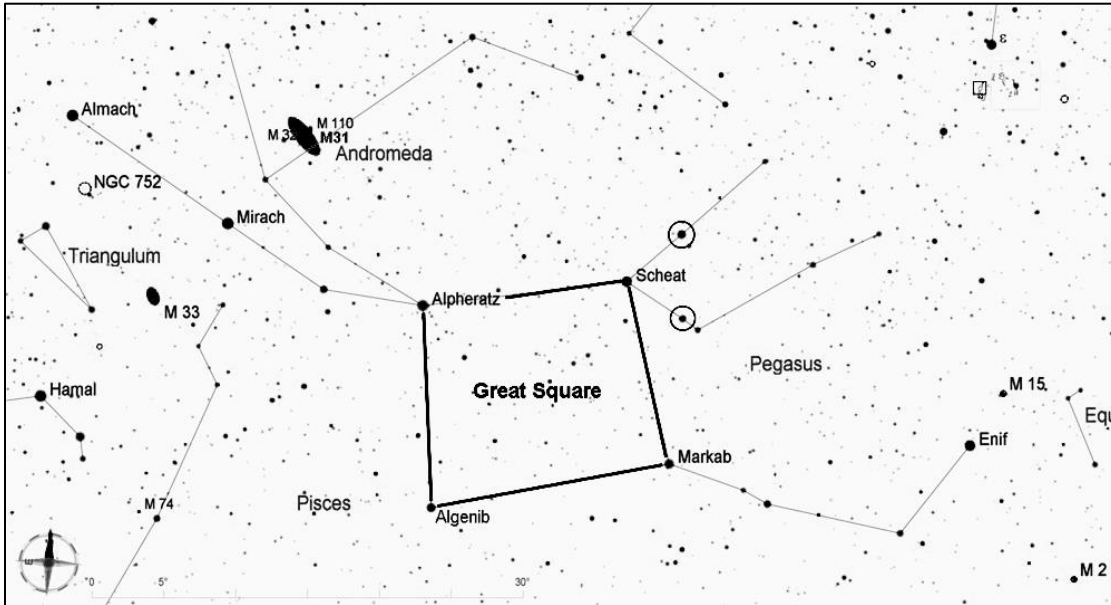


## NGC 891 (Caldwell 23), Galaxy in Andromeda

NGC 891 is a nice spindle-shaped spiral galaxy viewed almost edge-on, about 27 million light years away. It is about magnitude 10.8 and more than 13 arcminutes in length (almost half the apparent diameter of the Moon). Its bright center is the easiest part to see, but an aperture of 8 inches or more is probably needed to see its faint pointy arms and dust lane. Using high magnification may help.



Start by finding the Great Square of Pegasus, which rises in the eastern sky during the early fall evenings, is high overhead later in the fall, and sinks in the western sky during early winter. To be sure you know how the square is oriented in the sky, look for the two stars outside the northwest corner of the square (circled in the chart here) that form a small triangle with Scheat.

The constellation Andromeda stretches to the northeast from the Great Square, starting at the second-magnitude star Alpheratz. Using the naked eye, follow the stars of Andromeda east to Almach, magnitude 2. NGC 891 is 3.5 degrees to the east of Almach. To find the spot, it may help to visualize an isosceles triangle with  $\beta$  Andromeda (magnitude 4.8), as shown in the chart below.

